

**LOADALL** | 542-70 AGRIPRO



**STAGE V**

MAX SPEED  
**50kph**

MAX POWER  
**173hp / 129kW**

MAX TORQUE  
**690Nm**





When creating the NEW **JCB AGRI PRO**, we took our industry leading agricultural Telehandler and added **more power, more torque, more speed, more flow and more stopping power**, resulting in new, never seen before levels of performance and productivity to compliment the already world-beating levels of comfort, strength, durability and reliability.

We call this **JCB PRO**FORMANCE.



# MORE SPEED

**JCB** PROFORMANCE

The new high speed DualTech Variable Transmission is capable of a top roading and towing speed of up to 50kph.



## GET THE JOB DONE FASTER

The hydrostatic working speed increases to 22kph, with faster acceleration around the yard and in the field.





# MORE PRODUCTIVITY

**JCB** PROFORMANCE

Our most powerful and productive telehandler yet, providing a 22% increase in dynamic tractive effort at working speeds and a 25% increase in on-road productivity.



## **GREATER VERSATILITY**

New 160 litres per minute variable displacement piston pump - delivering 14% more flow for improved hydraulic multi-functioning.



# MORE POWER

**JCB** PROFORMANCE

Our new 173hp (129kW), 4.8 litre, JCB DIESELMAX, Stage V engine produces 690Nm of torque at only 1500rpm, providing more power than ever before.



## EXTRA HYDRAULIC POWER

Maximise the performance with increased lift capacity in the working area, at reach and at height.



# MORE EFFICIENCY

**JCB** PROFORMANCE

Our DualTech Variable Transmissions are half hydrostatic and half direct mechanical drive, increasing roading efficiency, towing capability and high-speed performance.



## **GREATER FUEL EFFICIENCY**

Our Smart Hydraulics system regenerates the oil in the rams, meaning less engine revs and more fuel saved.



# MORE COMFORT

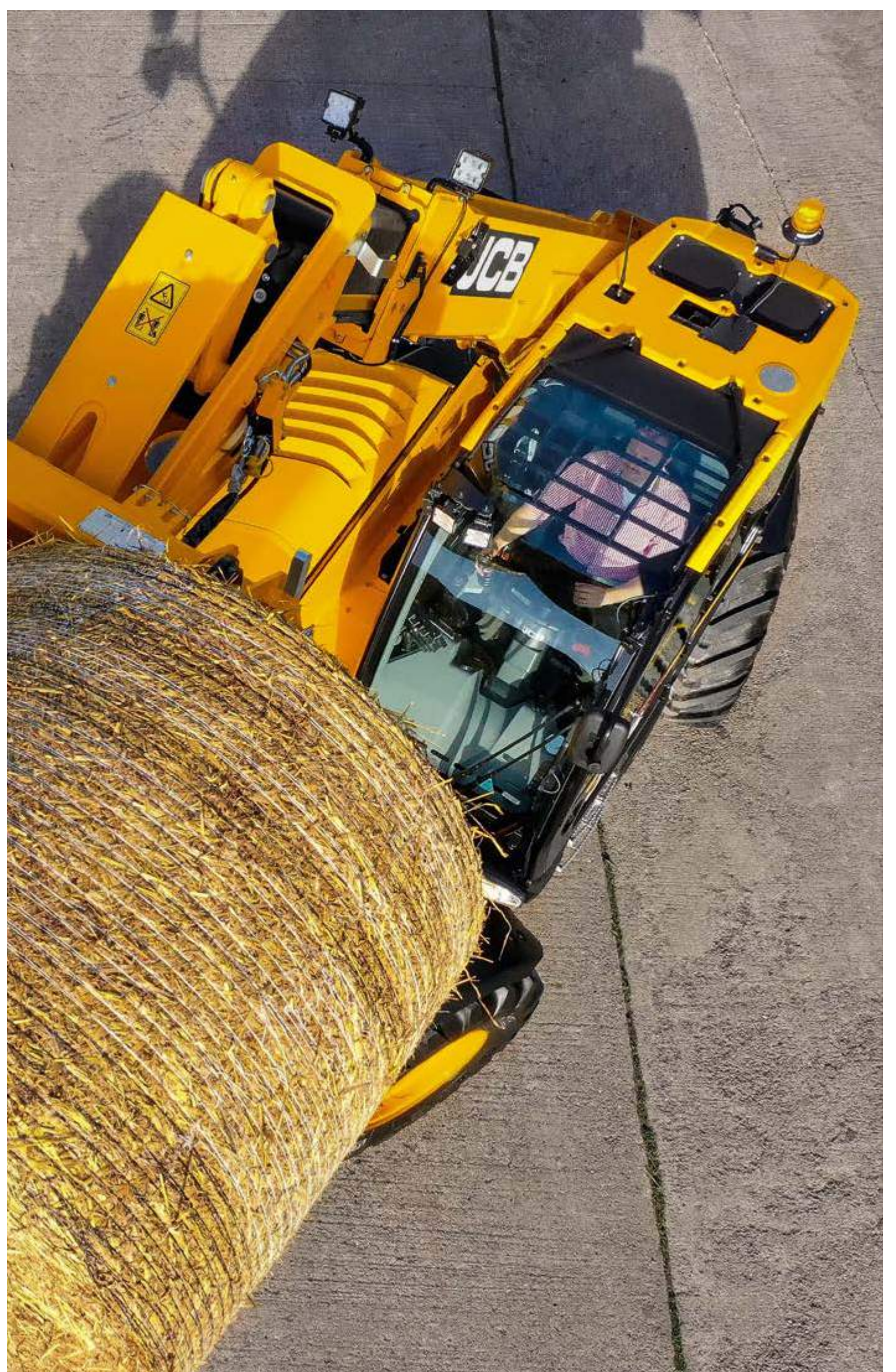
**JCB** PROFORMANCE

Our half leather, heated and vented air suspension seat, with electrically adjustable lumbar support and mounted armrest, top off the spacious operator environment.



## MAXIMUM STABILITY

Larger axles, 500mm wide tyres and integrated front and rear hydraulic braking systems provide greater stability and comfort.





# LOADALL | 542-70 AGRIPRO



## SPECIFICATION.

MODEL	AGRIPRO
Lift height	7.04m
Lift capacities	4,200kg
Maximum engine power	173hp / 129kw
Maximum speed	50kph
Lift capacity at full height	3,000kg
Lift capacity at full reach	1,750kg
Forward reach at max height	0.48m
Reach with 1 tonne payload	3.71m

**LIVE JCB LINK**  
FITTED AS STANDARD



## STANDARD FEATURES.

- New JCB DIESELMAX Stage V compliant engine
- CommandPlus Cab
- DualTech Variable Transmission
- 50kph maximum speed
- Front / rear hydraulic auxiliary
- Smart Hydraulics
- 11 LED worklights
- European tractor homologated





**“There isn’t a lot of other competition out there for what our job demands and what this machine marries up, its a match made in heaven.”**

**OLIVER WILLIAMS | DAIRY FARMER, ENGLAND**

**JCB PROFORMANCE.**

**REQUEST A QUOTE**



**www.jcb.com**

